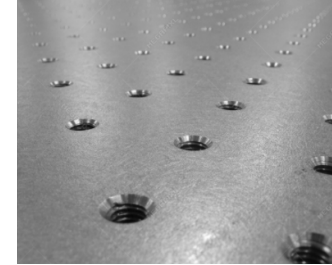
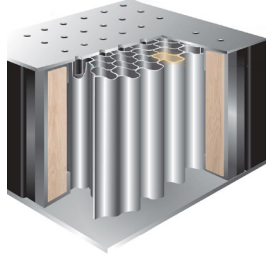


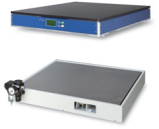




# OptoSigma<sup>®</sup> OPTICAL TABLES & WORK SURFACES



Our optical tables and work surfaces are designed specifically for applications that are susceptible to vibration like spectroscopy, interferometry, holography, microscopy, nanopositioning, and ultrafast research. OptoSigma's offering of rigid, lightweight work surfaces, combined with uniquely designed vibration isolator systems, together, provide ergonomic optical work surfaces that efficiently manage the effects of vibration across a variety of applications.

| Products                                                                                                                                |                                                                                                                                                                                                                                                | Specifications and Options                                                                                  |                                                                                                                                                                               |
|-----------------------------------------------------------------------------------------------------------------------------------------|------------------------------------------------------------------------------------------------------------------------------------------------------------------------------------------------------------------------------------------------|-------------------------------------------------------------------------------------------------------------|-------------------------------------------------------------------------------------------------------------------------------------------------------------------------------|
|  <b>Optical Tables</b><br>OSDVIO-I, -R Series          | <ul style="list-style-type: none"> <li>Complete with frame and tabletop</li> <li>Self-leveling or rigid systems</li> <li>Sealed steel honeycomb core</li> <li>Includes rolling casters</li> </ul>                                              | Surface Sizes<br>Surface Height<br>Mounting Holes<br>Damping<br>Isolation Options                           | 0.9x0.9-1.5x3.6 (3x3-5x12) [m (~ft.)]<br>0.9 (3.0) [m (~ft.)]<br>M6x1 (1/4-20) sealed holes<br>Broadband<br>Rigid or Pneumatic(80-90% @10Hz)                                  |
|  <b>Desk-Type Workstations</b><br>OSDVID Series      | <ul style="list-style-type: none"> <li>Ergonomic design for seated users</li> <li>Inset pneumatically isolated instrument surface</li> <li>Self-leveling</li> <li>Standard and cleanroom versions</li> <li>Includes rolling casters</li> </ul> | Overall Desk Sizes<br>Isolated Surface Sizes<br>Surface Height Isolation<br>Type<br>Cleanroom Class Version | 0.7x1.1-1.0x2.2 (2.3x3.6-3.3x7.2) [m (~ft.)]<br>0.4x0.5-0.8x1.5 (1.3x1.6-2.6x4.9) [m (~ft.)]<br>0.8 (2.6) [m (~ft.)]<br>Pneumatic, 80-95% @10Hz<br>ISO 7 (FED STD: Class 10K) |
|  <b>Isolation Platforms</b><br>OSDVIT, OSDVIA Series | <ul style="list-style-type: none"> <li>Active electronic or pneumatic isolation versions</li> <li>Enables nanoscale measurements</li> <li>Automatic leveling</li> <li>Portable low-profile designs</li> </ul>                                  | Surface Sizes<br>Surface Height<br>Mounting Holes<br>Electronic Isolation<br>Pneumatic Isolation            | 0.4x0.5-0.6x0.8 (1.3x1.6-2.0x2.6) [m (~ft.)]<br>90 (3.5) [mm (~in.)]<br>M6x1 (1/4-20) holes<br>99% @10Hz<br>70-80% @10Hz                                                      |
|  <b>Breadboards</b><br>OSDVIO-B Series               | <ul style="list-style-type: none"> <li>High-density steel honeycomb core</li> <li>Broadband damping</li> <li>Sealed mounting holes</li> <li>Magnetic stainless steel surface</li> </ul>                                                        | Surface Sizes<br>Thickness Range<br>Mounting Holes<br>Damping<br>Top Skin Finish                            | 0.9x0.9-1.5x3.6 (3x3-5x12) [m (~ft.)]<br>50(2)-400(16) [mm (~in.)]<br>M6x1 (1/4-20) tapped holes (sealed)<br>Broadband<br>Cleaned 100 µin. polydirectional grain              |
|  <b>Cabinets, Shelves, and Accessories</b>           | <ul style="list-style-type: none"> <li>Overhead shelves</li> <li>Storage cabinets and dark boxes</li> <li>Air compressors</li> <li>Pneumatic couplers &amp; tubing</li> <li>Table setup tools</li> </ul>                                       | Overhead Shelf Sizes<br>Cabinet Options<br>Air Compressor<br>Pneumatic Tubing<br>Tool Types                 | Table widths from 1.2-3.6 (4-12) [m (~ft.)]<br>Humidity control to 6±1% RH<br>Portable, 40-80 psi<br>6-mm OD<br>Bubble levels                                                 |

Please contact us for customized versions of these products. Academic discounts available.



## Got Snacks?

We now include a Light Snack Box  
upon request with your order.



**OptoSigma Corporation**

3210 S. Croddy Way  
Santa Ana, CA 92704  
Ph.(949)851-5881 Fax(949)851-5058  
email: [sales@optosigma.com](mailto:sales@optosigma.com)

