

OPTICAL TABLES



STANDARD ISOLATION

Discover our series of rigid and pneumatic passive isolation optical tables.

A cost-effective and must have product to build your laboratory.

- Good price
- Better quality
- Great experience

TABLE OPTIONS

Discover our list options you can have with your table.

We have a solution for your application

- More space for your opto-mechanis ?
- Different Hole Patterns ?
- Different Table Dimensions ?

DESKS AND OPTIONS

Discover our series of workstations and all their options to make your workspace a combination of your experience and your work.

- Space for a Instruments/PC
- Desk type table
- Active vibration isolation



STANDARD ISOLATION

When it comes to discussing the type of support to use for an optical table there are multiple choices.

The most basic and most common options is passive isolation.

This isolation is based on the mechanical properties of the table and isn't assisted by an electronic device.

You can separate this type of isolation into 2 categories : Rigid & Pneumatic

For both types of support, you can select either : Tie-bar (joined frame) or Self Standing (4, 6 or 8 Legs)

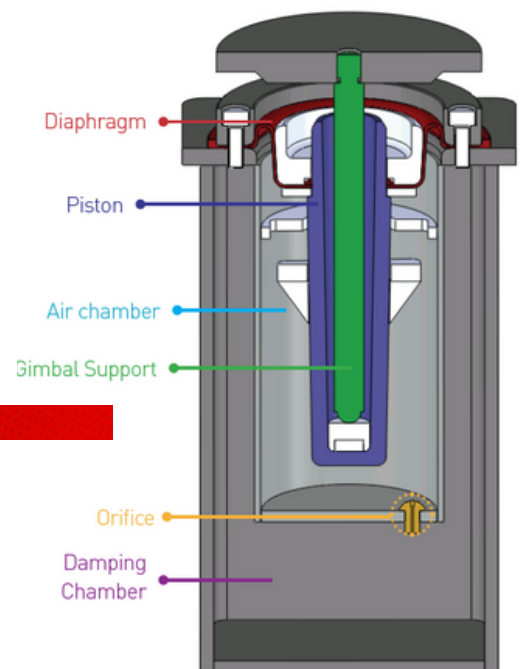


RIGID

- Cost effective
- Non critical experiment
- Manual leveling System
- High Stiffness legs

PNEUMATIC

- Independent Isolators
- Dual Chamber Design
- Self-leveling System
- Damping System
- Preventing amplifying vibrations



Cutaway View of Pneumatic Isolator

TECHNICAL NOTES

- Steel Honeycomb Top
- 25mm x 25mm M6 Tapped Holes
- Individual cups for each hole to prevent liquid damage
- Table dimensions from 0.6m to 5m
- Breadboard thickness : 25mm ; 50mm ; 100mm ; 200 mm ; 300mm ; 400mm

TABLE OPTIONS

When designing a new laboratory or when adding new optical tables to a pre-existing lab, space can sometimes be an issue.

Therefore, there is a necessity to find space, and for that, we offer various possibilities to our customer when it comes to an efficient choice for the laboratories optical tables.

Our most popular Overhead Shelf as well as our table joined system are some of the options available at OptoSigma to make sure you can optimize the space in your laboratory room.



OVERHEAD SHELF

- Protect from vibration producing equipment
- Adjustable height
- Adjustable positioning and size of the shelves along the rail

CUSTOMIZATION POSSIBILITIES

- Joined Table System
- Different Hole Pattern (Ex: M4, Imperial)
- Non Magnetic Table Top
- Custom Breadboard Shape
- Table Enclosure
- Armrest, Sliding Shelf, Drawers, Keyboard Shelf



TECHNICAL NOTES

- Overhead Shelf : From 1.2m to 3.6m long
- Overhead Shelf : From 2 to 5 shelves
- Non Magnetic Breadboard : Stainless Steel (Vacuum & Clean room Compatible)

DESK AND OPTIONS

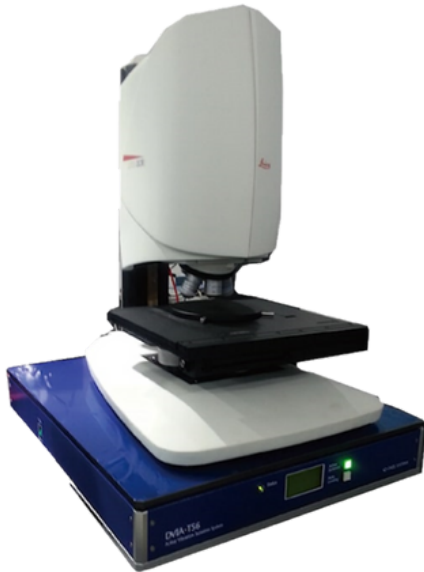
Do you have issue finding space to work in your laboratory ?

Your optical tables take too much space for your new experiment ?

The Desk Type Laboratories Workstations are made for you !

Half vibration isolation breadboard | Half Desk.

You can then add all the different options you would like to really make you workspace as efficient and comfortable as you wish !



LABORATORIES DESKTOPS

- Smaller Frames
- **Active Table top**
- Real time monitoring UI software
- No air required
- Ideal for Microscopy

WORKSTATIONS OPTIONS

- Drawer
- Overhead and Undershelf
- Space for both Desk and Breadboard
- Roller casters to move around



TECHNICAL NOTES

- Stainless Steel (Breadboard) & Melamine Laminate (Workspace)
- 25mm x 25mm M6 Tapped Holes
- Pneumatic Isolation
- Table dimensions from 0.4m to 1.5m

PERFORMANCE

Your application is highly sensitive to vibration ?

Having trouble choosing between the different types of isolation ?

What are the expected performances of the different types of isolation ?

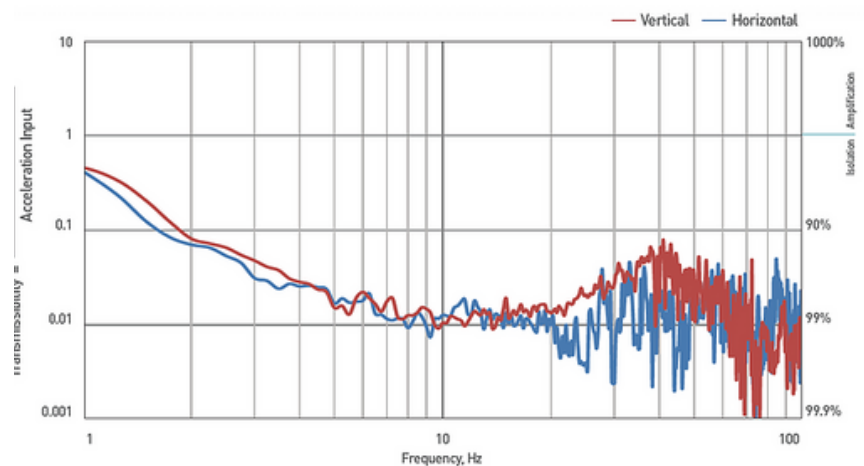
The real difference comes from low frequency vibrations.

Our active isolation table has NO resonant frequency which allows for a complete adjustment from all the different frequencies. On the other hand, our pneumatic isolation, though highly performant at higher frequencies, does not match the Active isolation system at lower frequencies.

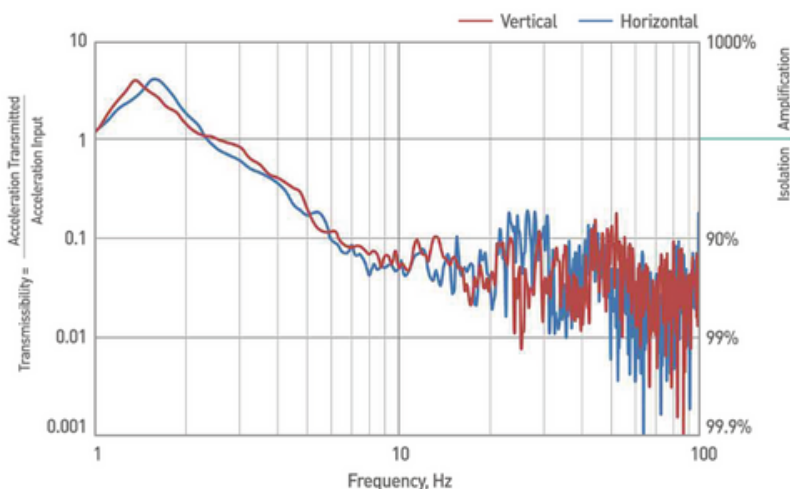
ACTIVE ISOLATION

- Electronic Feedback and control
- Real Time Monitoring
- NO RESONANT FREQUENCY
- Ideal for Microscopy
- Vibration Isolation at 10 Hz
Vertical-Horizontal : 99 - 99 %
- Active Isolation Range : 0.5 - 100 Hz

Vibration Isolation Performance



Performance



PNEUMATIC ISOLATION

- Resonant Frequency
Vertical-Horizontal : 12.7 - 1.7 Hz
- Vibration Isolation at 10 Hz
Vertical-Horizontal : 80 - 95 %



OptoSigma®

CONTACT US !



www.optosigma.com

**TAKE
A NEW
LOOK**

Light Solutions for Life.
www.optosigma.com

3 rue de la Terre de Feu, 91940, Les Ulis, France
+33 1 69 18 17 00

www.optosigma.com
sales@optosigma-europe.com