

Manual Stage Compatibility Guide:

OptoSigma® provides well over 1000 different manual translation stage configurations, each to fit various application and size requirements. In order to make them work together, we use a standard hole pattern across each type of stage. This feature allows our individual linear stages, rotation stages and goniometers to be assembled together to cover positioning and alignment in up to six degrees of freedom (x, y, z and pitch, yaw, roll). Use this selection guide to quickly find which of our linear, rotation, and goniometric stages are compatible with each other.

Using the Selection Guide: From the first column, find the platform size that best fits your application needs. Going across the table you can see our options for compatible linear stages, rotation stages and goniometers. Use the legend key located at the base of the table to identify the abbreviated stage types (e.g. EX_cTM, CR, BB, DT, ZX, V6). Each abbreviation is individually hyperlinked to the stage family which contains the mount of interest. Once on the stage family web page, use the filters on the left to find a stage with the compatible platform size and hole pattern.

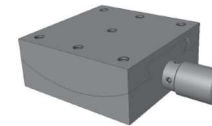
Manual Stage Compatibility Guide



Single-Axis Linear Stage Options



Rotation Stage Options



Goniometer Options

Stage Platform Size	Main Mounting Hole Pattern ¹	Single-Axis Linear Stage Options	Rotation Stage Options	Goniometer Options
15 x 15 mm	M2 on □10 mm	DT	WG (top mount only)	DT
25 x 25 mm	M2 on □20 mm	EX_cTM CR BB DT ZH V6	SR, WG, SQ	DT
40 x 40 mm	M3 on □32 mm	EX_cTM CR BB DT ZH V6	SR, WG, SQ1, SQ2, V6	DT, EX_cTM-M, EX_cTM-L, VG, V6
	6-32 on 1.25 in.	EX_cTM CR BB DT ZH V6	SR, AR, WG	DT, EX_cTM-M, EX_cTM-L, VG
60 x 60 mm	M4 on □50 mm	EX_cTM CR BB DT ZH V6	SR, AR1, AR2, WG, SQ1, SQ2 V6	DT, EX_cTM-M, EX_cTM-L, VG
65 x 65 mm	M6 on □50 mm	EX_cTM CR BB DT ZH V6	SR, AR1, AR2, WG	DT, EX_cTM-M, EX_cTM-L, VG
	¼-20 on □2.0 in.	EX_cTM CR BB DT ZH V6	SR, AR1, AR2, WG	DT, EX_cTM-M, EX_cTM-L, VG
80 x 80 mm	M4 on □70 mm	EX_cTM CR, ZH	SR, AR	-
100 x 100 mm	M4 on □90 mm	EX_cTM CR, ZH	SR, AR	-
120 x 120 mm	M4 on □100 mm	EX_cTM CR, ZH	SR, AR	BB
	M6 on □100 mm	EX_cTM CR, ZH	SR, AR	-
	¼-20 on □4.0 in.	EX_cTM CR, ZH	SR, AR	-
	<p>Note: The “□” symbol designates a square hole pattern of the dimension indicated, i.e. “M2 on □10 mm” implies M2 threaded holes on a 10 x 10 mm square hole pattern.</p>	<p><u>Linear Stage Legend</u> EX_cTM: Precision Bearing Steel Stages CR: Crossed Roller Aluminum Stages BB: Ball Bearing Aluminum Stages DT: Dovetail Stages ZH: Horizontal Platform Z-Axis Stages V6: Vacuum Compatible Stages</p>	<p><u>Rotation Stage Legend</u> SR: Standard Rotation Stages AR: Aperture Rotation Stages WG: Worm-Gear Rotation Stages SQ: Square Rotation Stages V6: Vacuum Compatible Rotation Stages</p>	<p><u>Goniometer Legend</u> EX_cTM-M: Precision Bearing Steel Goniometers w/ Micrometer EX_cTM-L: Precision Bearing Steel Goniometers w/ Lead Screw VG: V-groove Bearing Aluminum Goniometers BB: Ball Bearing Aluminum Goniometers DT: Dovetail Brass Goniometers V6: Vacuum Compatible Goniometers</p>